

DETTAGLI

- Elastico e coulisse in vita
- 2 tasche
- 1 tasca sul retro

COLORE

- 002 Verde
- 118 Azzurro

TESSUTO

- 100% cotone
- 185 g / m²

TAGLIE

- XS ÷ 4XL
- Slim Fit



Le misure indicate si riferiscono alle taglie **S** per i capi femminili, **L** per i capi maschili. Per i capi a taglia unica le misure indicate sono effettive.

Grande classico Giblor's: pantalone unisex a vita alta, dall'ottima vestibilità, amato per il taglio asciutto della gamba.

COLORI DISPONIBILI



002 Verde



118 Azzurro

TABELLE TAGLIE
E CORRISPONDENZE

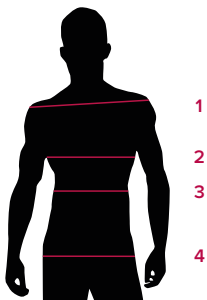
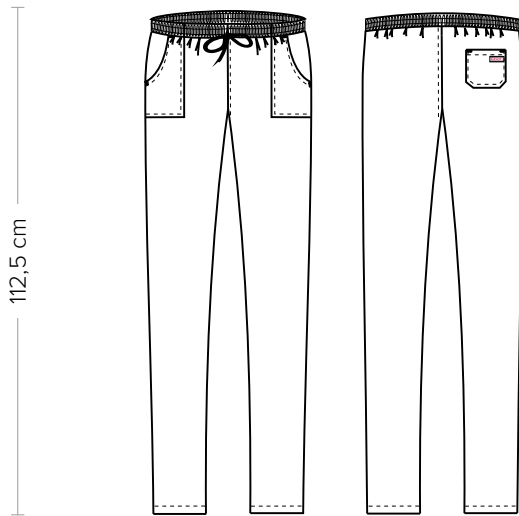


TABELLA ST-P2 SLIM FIT										
TAGLIA	XXS	XS	S	M	L	XL	XXL	3XL	4XL	5XL
1 - SPALLE										
2 - TORACE										
3 - VITA	72-81	81-85	85-89	89-93	93-97	97-103	103-109	109-115	115-121	121-129
4 - BACINO	87-91	91-95	95-100	100-104	104-108	108-115	115-121	121-127	127-133	133-140

GUIDA ALLE TAGLIE **1)** Prendere le misure anatomiche (corpo con abbigliamento intimo) senza stringere mantenendo ben teso il metro. **Nota:** nel caso vogliate indossare dei camici già con dell'abbigliamento sotto prendete le misure già abbigliati. **2)** Nel caso tra le misure prese vi fosse una misura a cavallo fra 2 taglie vi consigliamo di prendere quella più grande. **3)** Le misure della tabella sono espresse in centimetri.



DETAILS

- Elasticated waistband with drawstring
- 2 pockets
- 1 rear pocket

COLOURS

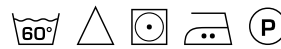
- 002 Green
- 118 Light blue

FABRIC

- 100% cotton
- 185 g / m²

SIZES

- XS ÷ 4XL
- Slim Fit



The measures indicated refer to sizes **S** for women, **L** for men. For one-size-fits-all garments, the measurements indicated are effective.

Giblor's great classic: unisex high-waisted trousers with an excellent fit, loved for the Slim Fit of the leg.

AVAILABLE COLOURS



002 Green



118 Light blue

SIZE TABLES AND CORRESPONDENCES

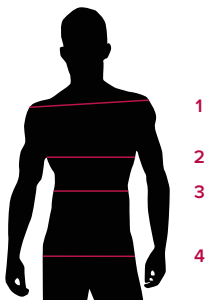


TABLE ST-P2 SLIM FIT

SIZE	XXS	XS	S	M	L	XL	XXL	3XL	4XL	5XL
1 - SHOULDERS										
2 - CHEST										
3 - WAIST	72-81	81-85	85-89	89-93	93-97	97-103	103-109	109-115	115-121	121-129
4 - HIPS	87-91	91-95	95-100	100-104	104-108	108-115	115-121	121-127	127-133	133-140

SIZE GUIDE **1)** Take the anatomical measurements (body with underwear) without tightening, keeping the measuring tape taut. Note: in case you want to wear of the gowns already with the clothing underneath take the measurements already dressed. **2)** If there is a measure between 2 sizes between the measurements taken, we advise you to take the bigger one. **3)** The measurements in the table are expressed in centimeters.